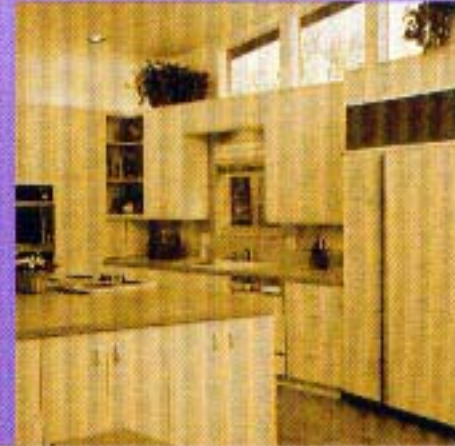
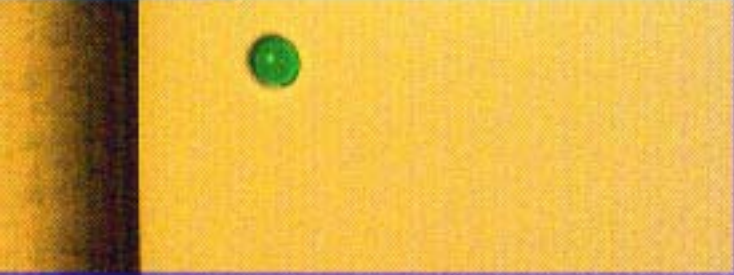
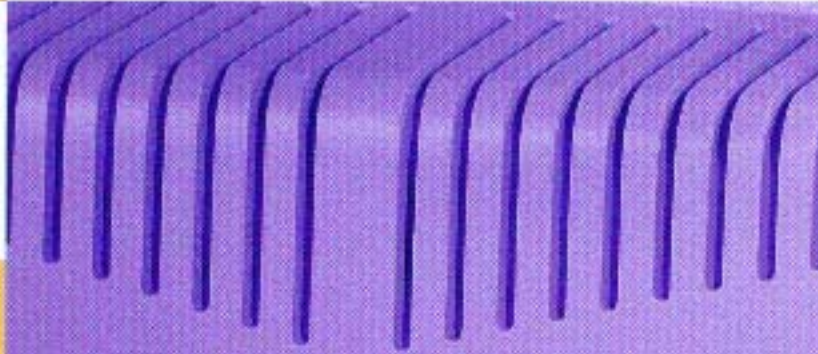
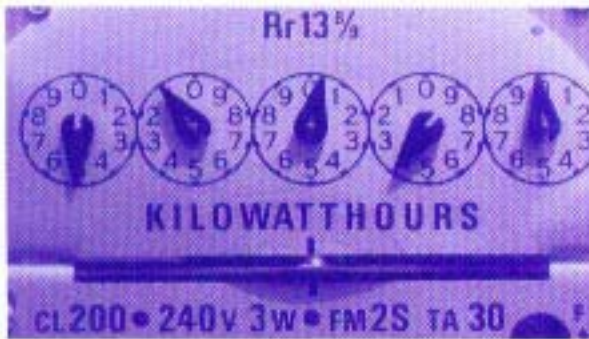


HOME NETWORK TO IP NETWORK CONNECTIVITY



A New Solution

FOR OFFERING MULTIPLE
TELEMETRY SERVICES
TO THE HOME



Coactive Networks

The Changing Utility Environment

A KEY OPPORTUNITY FOR MULTI-SERVICE HOME TELEMETRY

The environment for power, cable, and telecommunications providers is changing rapidly. A combination of technology advances, regulatory upheaval, and evolving service models have brought new cross-industry opportunities to a variety of companies who are seeking to retain customers and create new revenue streams. The key to taking advantage of these new opportunities is in providing *multiple bundled services* to the home, such as:

Automatic Meter Reading (AMR)

Demand Side Management (DSM) and Demand Limiting

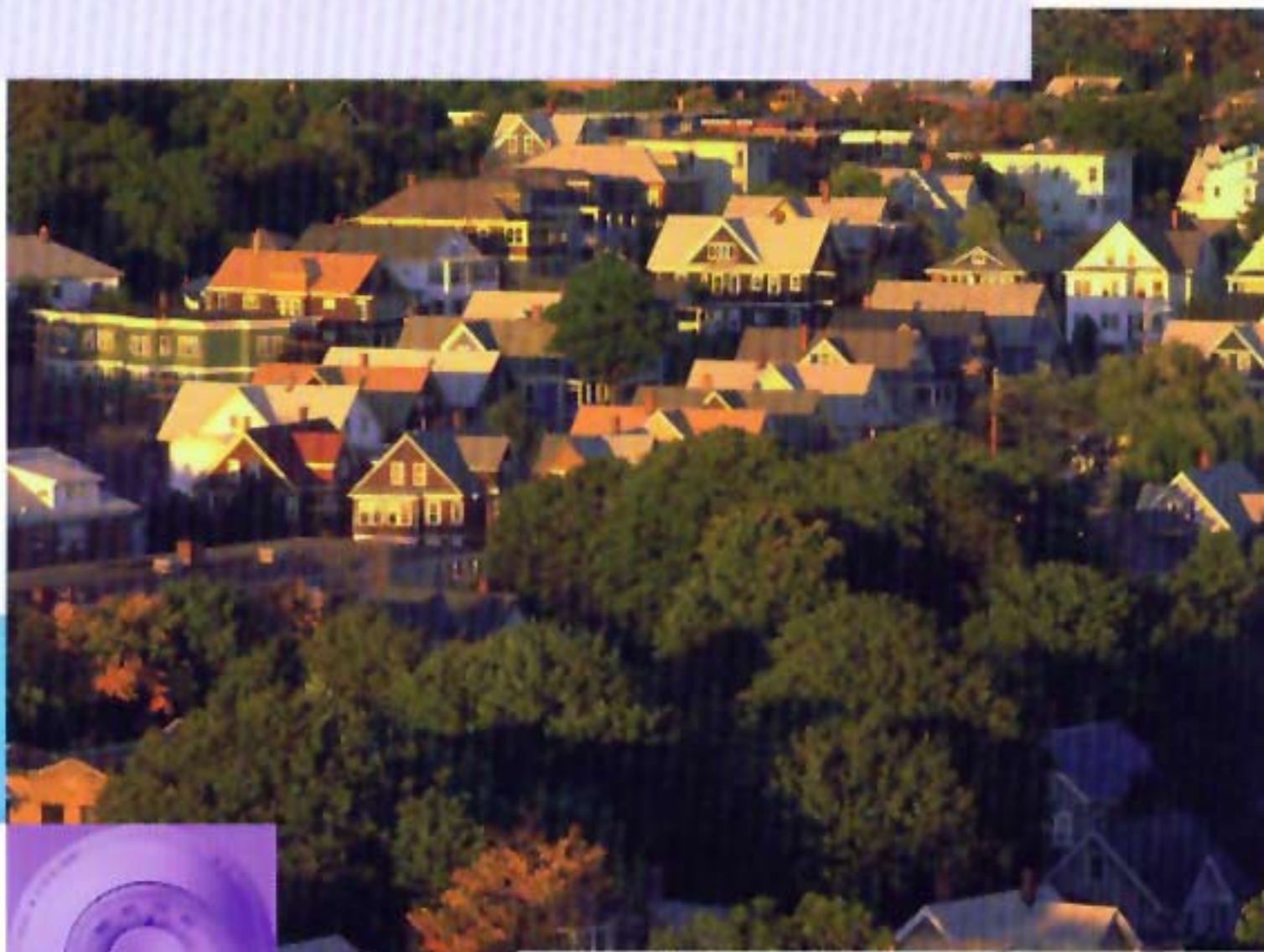
Home Security

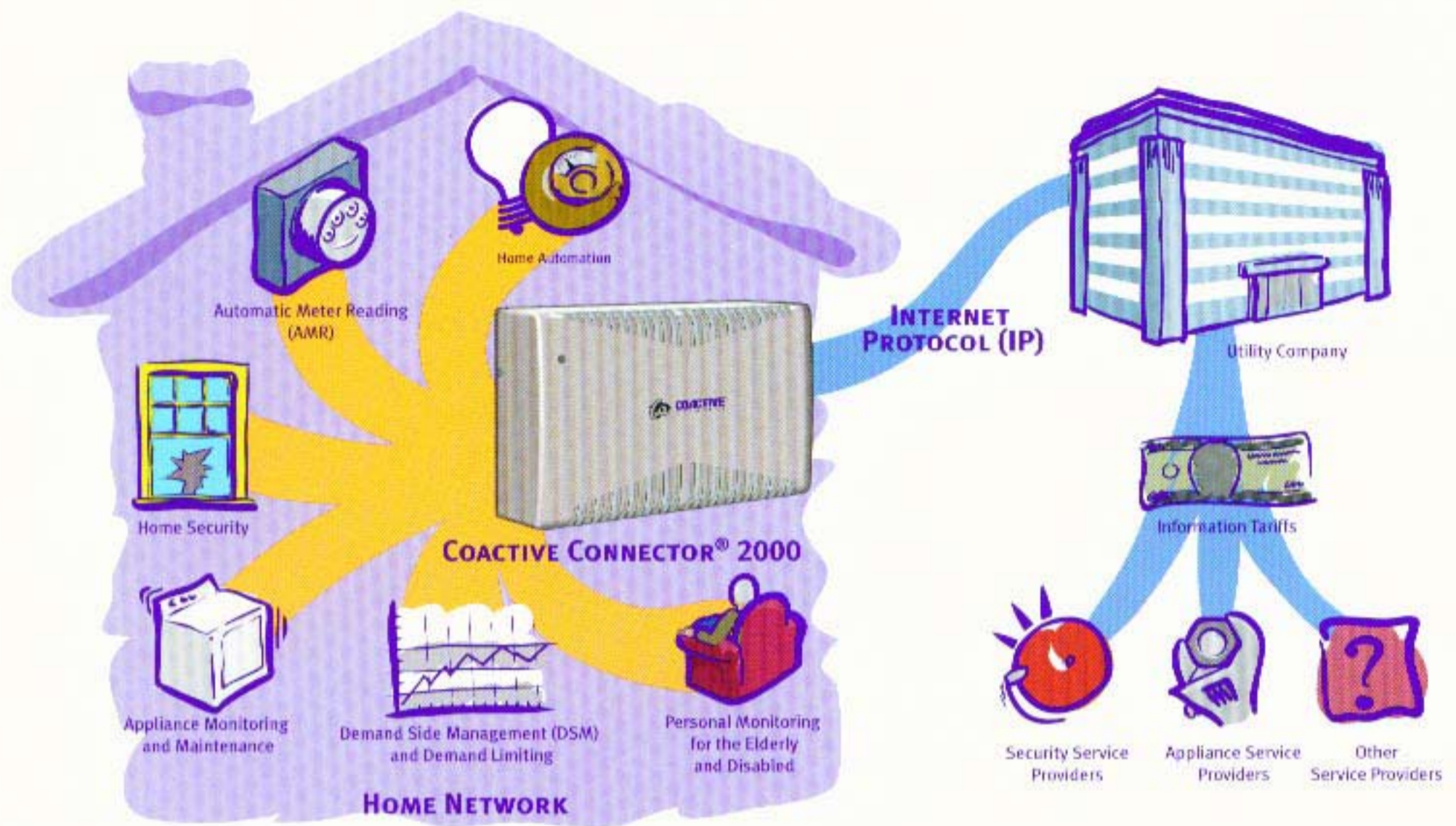
Appliance Monitoring and Maintenance

Personal Monitoring for the Elderly and Disabled

Home Automation

By offering multiple services as a bundled package, utilities can reduce customer churn, enter new markets, and gain an important foothold in the new world of home communications. The challenge is in deploying the infrastructure for these services at the right cost. The establishment of a reliable, flexible, low-cost home telemetry communications channel is the key to obtaining this infrastructure.





The Advantages

OF OPEN NETWORK CONNECTIVITY SOLUTIONS FOR THE HOME

Establishing a home communications channel can be accomplished in the most flexible and future-proof way by taking advantage of existing technology standards. By adhering to open standards in home networking, you gain the advantage of multiple in-home device vendors and ready-to-go communications between home control systems such as meters, security systems, and lighting. By adhering to Internet standards in accessing

the home, you take advantage of the enormous efforts being made in this area to cost-effectively deliver Internet access, such as dial-up PPP, cable modem, ISDN, and DSL.

EIA-709 (LonWorks[®]) is the leading international standard for home control networking, supporting both powerline media for existing homes and twisted pair for new homes. Due to the wide adoption of this standard in

commercial building automation, many control systems such as energy and security are already based upon EIA-709. Internet Protocol (IP) also offers the advantage of multiple media in addressing the wide area connection to the home, and along with related Web technologies has become the ubiquitous standard for accessing information of any kind.

Coactive Networks

BREAKTHROUGH CONNECTIVITY SOLUTIONS FOR HOME TELEMETRY

Coactive Networks has developed unique patent-pending technology which, as realized in the IOConnect Architecture™ and the Coactive Connector® 2000 Series, provides the reliability and scalability required for home connectivity at a new price/performance ratio. Coactive's breakthrough technology is enabling players in this market to move forward aggressively with a home telemetry solution which meets immediate revenue opportunities while providing a clear path to future enhancements and expanded services. As a technology leader and first-to-market innovator, Coactive offers the most advanced solutions available for wide-area connectivity to the home control network:

Reliability and Flexibility

Coactive offers a general networking solution to provide flexible access to home control devices and appliances, enabling the establishment of multiple services and providing a clear path to future enhancements.

Scalability and Robustness

Coactive's unique approach, based upon distributed object technology, allows the deployment of systems scalable to millions of homes, while maintaining robustness and performance.

Low Cost of Ownership

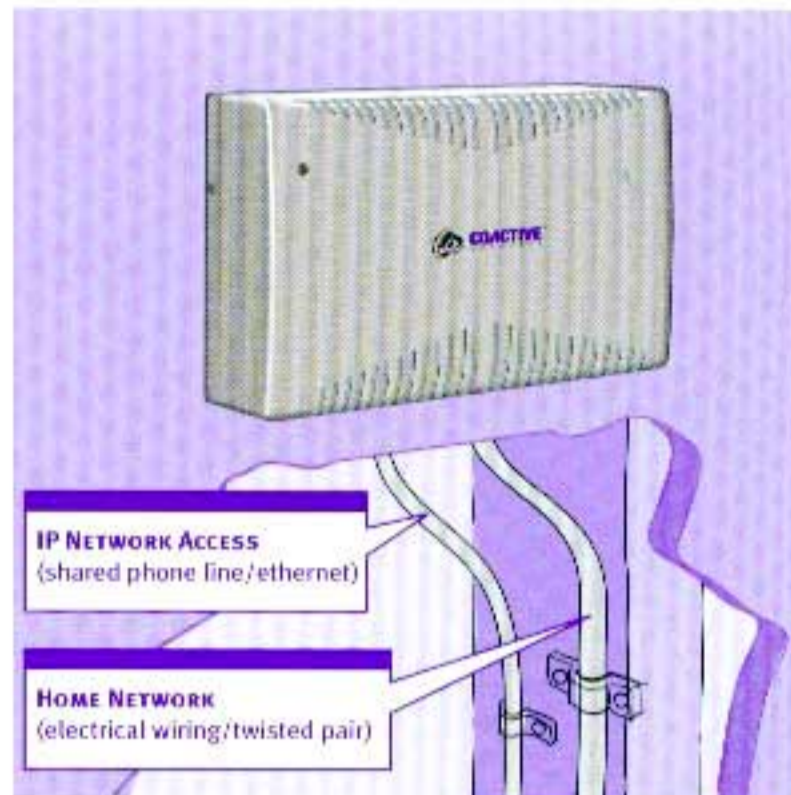
Manageability features and software upgradeability allow Coactive to offer a solution that minimizes total cost of ownership by simplifying system management and maintenance.

Short Time-to-Market Solution

Coactive's solution is based on an existing technology architecture and shipping products. This assures the shortest time to market and the lowest possible technical and project risk.

Cost Effectiveness

Coactive's solution is based on a next-generation design using state-of-the-art components, making it extremely cost effective. Coactive's history and ongoing commitment to aggressive R&D investments will continue to push the envelope of price/performance.



ABOUT COACTIVE NETWORKS

Coactive Networks is dedicated to bridging the gap between the control and data networking worlds and extending the reach of Internet technologies to the control systems in our homes and businesses. The leader in providing LonWorks connectivity solutions to the commercial building automation market, Coactive has the products, partnerships and the backing of industry leaders to enable flexible and effective access to home control systems. Detailed information on Coactive products, news announcements, seminars, and support is available on the World Wide Web at <http://www.coactive.com>.

Coactive Networks. Connecting Networks to the Real World.

Coactive, the Coactive Logo, Coactive Connector, and IOConnect Architecture are trademarks or registered trademarks of Coactive Networks, Inc. in the US and other countries. LonWorks is a trademark of Echelon Corporation. All other brands and names are the property of their respective owners.

© Copyright 1999 Coactive Networks, Inc. Specifications are subject to change without notice.

Part # BR-LT-001



Coactive Systems
Broadband Energy Networks
7000 Terminal Square
Upper Darby, PA 19082