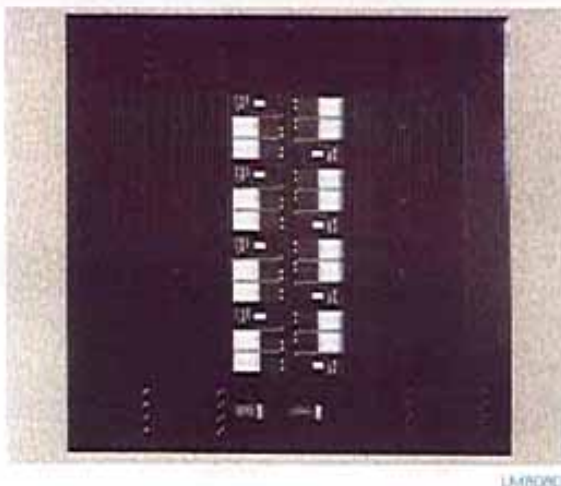
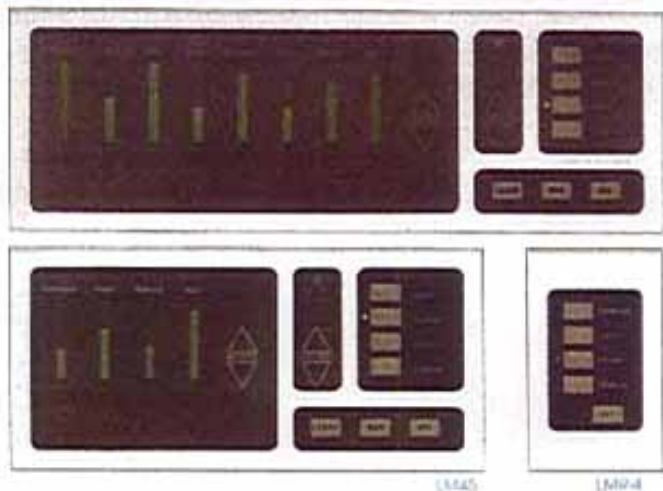


# LYTEMODE



## Lytemode Systems

For the large or complex project that requires advanced lighting control equipment, Lightolier offers the Lytemode Systems. These systems afford state of the art control functions and are capable of dimming virtually unlimited electrical loads through the use of modular components that are available off-the-shelf. This gives the user the sophistication and flexibility of custom systems combined with the benefits of standardization.

### Features :

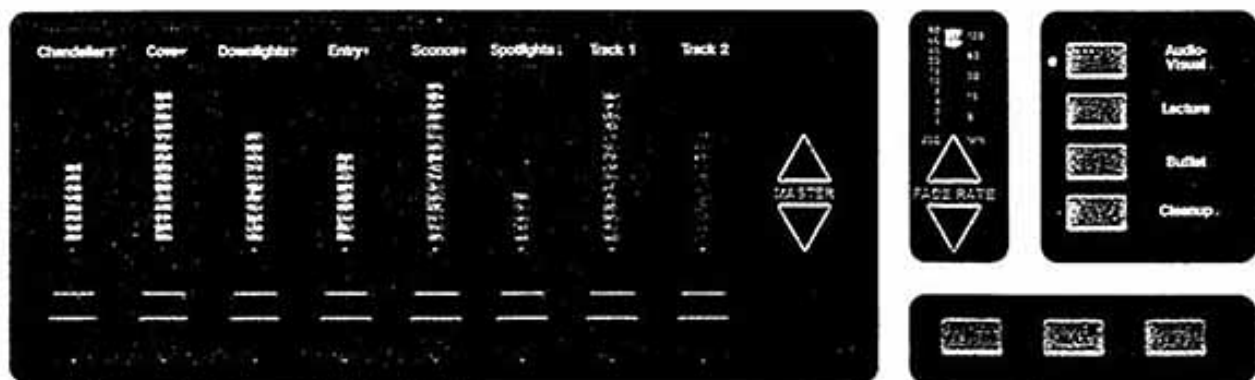
- Sleek, attractive appearance adaptable to all wall textures and decorating styles.
- Built-in capacity for future expansion with readily available system components.
- Self-explanatory control panels for user-friendly operation with LED status indication for all functions.
- No protruding or moving parts.
- Visual LED display of lighting intensities.
- Virtually unlimited number of full or partial function control points.
- 2 to 13 preset Scenes.
- 4 to 32 lighting Channels.
- Adjustable fade rate from 1 second to 2 hours.
- Manual overrides to memory.
- Dims all Architectural Lighting Sources.
- Controls motors and other non-dim switching functions.
- Wireless Remote Control options
- Timeclock Control options
- Customized labelling performed at installation.
- A wide variety of contemporary trim finishes is available
- Sealed moisture-resistant washable control surfaces



For further information consult the Lightolier Lytemode Catalog or your Lightolier Sales Representative.

Patents Pending

Lighting combined with Lighting Controls transforms an ordinary space into a living or working environment. When properly controlled, lighting creates interest, adds comfort and increases productivity. Lytemode Control Systems from Lightolier insure that lighting is utilized to its full potential, blending functional simplicity with reliable, high performance electronic designs.



LM 85

Lightolier's Lytemode Systems represent an advanced, modular approach to traditional, customized dimming systems. Bulky mechanical control panels are replaced by compact, flexible, electronic modules that are virtually unlimited in their ability to adapt to changing user requirements. Each module has been designed and tested to interface optimally with other modules of the system to provide reliable performance in every installation, from the simple to the complex lighting configuration.

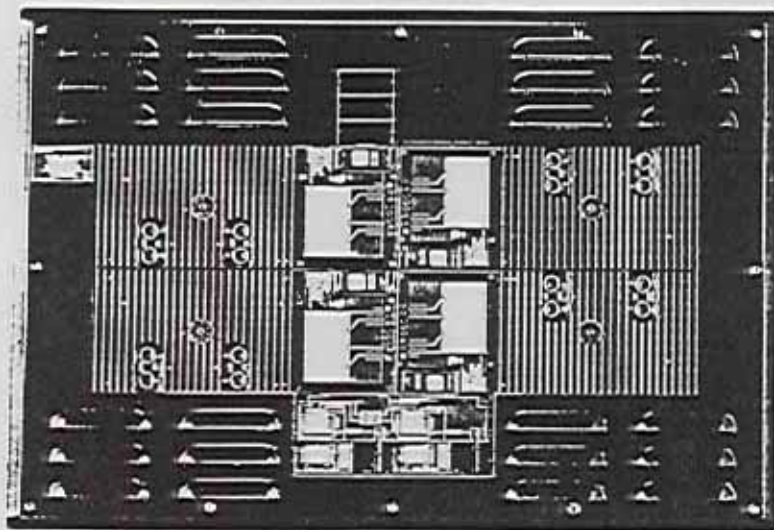
Control panel functions are labeled to be self-explanatory, increasing the occupant's sense of comfort and control by eliminating confusion and frustration. Fully enclosed gas tight switch panels without moving parts insure that the controls will function reliably over the life of the installation. System functions are prominently displayed by LED readouts of scene status and channel intensities, further adding to the usefulness of the system.

Lytemode remote dimmers utilize the latest advancements in solid-state dimming technology to provide consistent, repeatable performance in the most demanding environments. Universal dimmers are used to control Incandescent, Low Voltage Incandescent, Neon/Cold Cathode and General Inductive lighting loads to minimize costly mistakes in applying the system. Fluorescent Dimmers and Non-Dim solid state relays are also available and are interchangeable with Universal dimmers further adding to the flexibility of the entire system. Dimmer Enclosures are designed to install and assemble like familiar breaker panels and may be recessed to conserve costly wall space.

**Lightolier**, America's first name in lighting is now revolutionizing lighting controls with the most advanced systems available today. **Lytemode**

# LYTEMODE ENCLOSURE AND DIMMER FOR LOWER WATTAGE MULTI-CHANNEL APPLICATIONS

**NEW  
PRODUCT**



LM-4080

NOTE: The Lytemode Dimmer Enclosure can create some audible noise. Lightbulb recommendations that are not mounted in acoustically sensitive areas.

## LM-4080 - LYTEMODE QUAD PACK DIMMER MODULE ENCLOSURE

The new Lytemode LM-4080 Dimmer Enclosure is a compact, economical solution to any lower wattage project.

### FEATURES:

- The only Cabinet for use with the new Lytemode Quad Dimmer Module (LM4-1200)\*
- Capable of handling up to 16 dimmers (4 Quad Modules)
- 4,000 watts per module
- 16,000 watts overall capacity
- Compact size/Recessable
- LED Voltmeter
- Test Potentiometer
- Assignment Matrix

\*Other Lytemode Dimmers or Non-Dimmer modules may be intermixed within the LM-4080 to match the specific load requirements of the project.

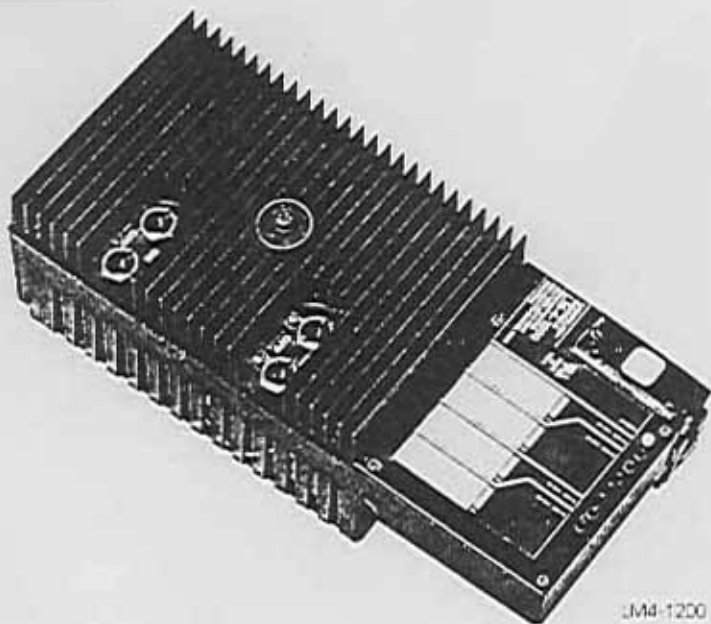
## LM4-1200 - LYTEMODE QUAD 1200 WATT, UNIVERSAL LOAD DIMMER MODULE

The Lytemode LM4-1200 is a high quality quad dimmer module that slots into the Lytemode LM-4080 Dimmer Enclosure.

### FEATURES:

- Four 1200w independent dimmers
- Maximum Load of 4000w (VA) total per module
- Toroidal Filters
- UL Listed for Incandescent, Low Voltage Incandescent, Neon/Cold Cathode, and General Inductive Loads.
- Voltage compensation circuitry
- Fully Solid-State components rated at not less than double the module overall rating
- Incorporates one 40 Amp input breaker and four 12.5 Amp output breakers.
- Field adjustable High Trim for each dimmer.

**NEW  
PRODUCT**



LM4-1200

# LIGHTOLIER®

a GKNVTZ company

## EXECUTIVE OFFICES

100 Lighting Way  
Secaucus, New Jersey 07094-0508  
(201) 864-3000

## MANUFACTURING AND WAREHOUSING

Edison, New Jersey  
Elgin, Illinois  
Fall River, Massachusetts  
Norwich, Connecticut  
Norcross (Atlanta), Georgia  
Dallas, Texas  
Compton (Los Angeles), California  
Seattle, Washington  
Montreal, P.Q., Canada  
Toronto, Ont., Canada

## SALES OFFICES

1071 Avenue of the Americas  
New York, N.Y. 10018  
(212) 719-1616

1266 Merchandise Mart  
Chicago, Illinois 60654  
(312) 321-3600

2650 Nova Drive  
Dallas, Texas 75229  
(214) 241-8691

501 West Walnut Street  
Compton (Los Angeles), California 90220  
(213) 637-1811

6675 Jimmy Carter Blvd.  
Norcross (Atlanta), Georgia 30071  
(404) 449-9181

2141 West Governor's Circle  
Houston, Texas 77092  
(713) 688-1391

1825 Emerson Street  
Denver, Colorado 80218  
(303) 863-7333

150 De Haro Street  
San Francisco, California 94103  
(415) 864-4455

Design Center Northwest  
5701 Sixth South, Suite 528  
Seattle, Washington 98108  
(206) 767-5701

5622 Delmar Blvd.  
St. Louis, Missouri 63112  
(314) 367-7910

496 North Kings Highway, Suite 222  
Cherry Hill, New Jersey 08034  
(609) 482-1555

15304 Spencerville Ct., Suite 102  
Burtonsville, MD 20866

## LIGHTOLIER CANADA INC.

3015 Rue Louis A. Armos  
Lachine, Que. H8T 1C4 Canada  
(514) 636-0670

1739 Orangebrook Court  
Pickering, Ont. L1W 3C8 Canada  
(416) 831-2525

Airport Executive Park  
10551 Shellbridge Way, Suite 157  
Richmond, B.C. V6X 2W8 Canada  
(604) 273-7732

# LIGHTOLIER®

For technical information  
call 1-800-526-2731  
from New Jersey, 1-201-864-3000

